



The ultimate urban experience.

SREEROSH  
*Sea Face*  
PANICKER ROAD, CALICUT.



SREEROSH  
*Sea Face*  
PANIKER ROAD, CALICUT.

**Proximity. Practicality. Prestige. Privacy.**

Live life on the move.

Be connected with people, life and all things throbbing.

Soak up the splendid and expansive views of the Arabian Sea.

Experience a lifestyle that dreams are made of.

And live it up! In your very own urban oasis even as the world zooms by.

**Come home to Sreerosh Sea Face.**

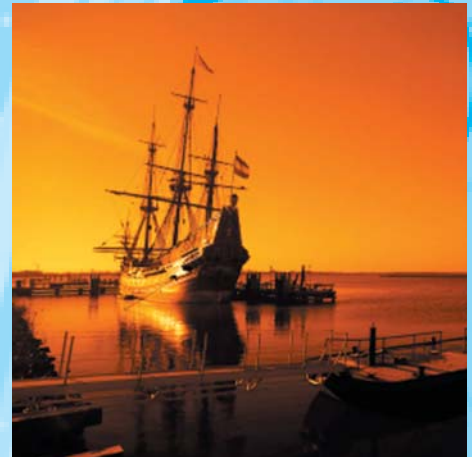
Designed to combine contemporary living with relaxed lifestyles, the spacious and luxuriously appointed apartments at Sreerosh Sea Face offer two and three bedroom plans with a choice of interior finishes. Cosmopolitan in feel and attitude, amenities and facilities abound in these apartments and each one conforms to the latest living standards and construction techniques.

Privacy, security and an active lifestyle are essential components of the layout scheme with built around fully landscaped public and private areas. The design also takes advantage of Calicut's crowning glory and offers stunning sea views and cool, cool breeze flowing in to provide a soothing atmosphere.

Sreerosh Sea Face is just ideal, if you are looking at a permanent residence in a superb location with strong capital growth – assured to reward you emotionally and financially in the years to come. What's more, they also offer you all the convenience without chaos and sophisticated living in urban surroundings.

So, if you are looking at apartments, Calicut is full of them. But if you are looking at a haven to unwind, relax and call home, look no further.

**Come home to Sreerosh Sea Face.**



## ADVANTAGE- LOCATION

Centrally located on Panicker Road, near Nadakkavu. Sreerosh Sea Face is close to educational institutions, offices, medical centres, shopping, recreational and entertainment areas. The Sea is just 250 metres away from the Apartments.

## ADVANTAGE - ACCESSIBILITY

Railway Station - 3 km

Airport - 30 Kms.

KSRTC Bus Stand - 1 km.

Private Bus Stand - 2 km.

Mananchira - 2.50 km.

Beach - 250 metres.

### **Close to:**

Malabar Christian College

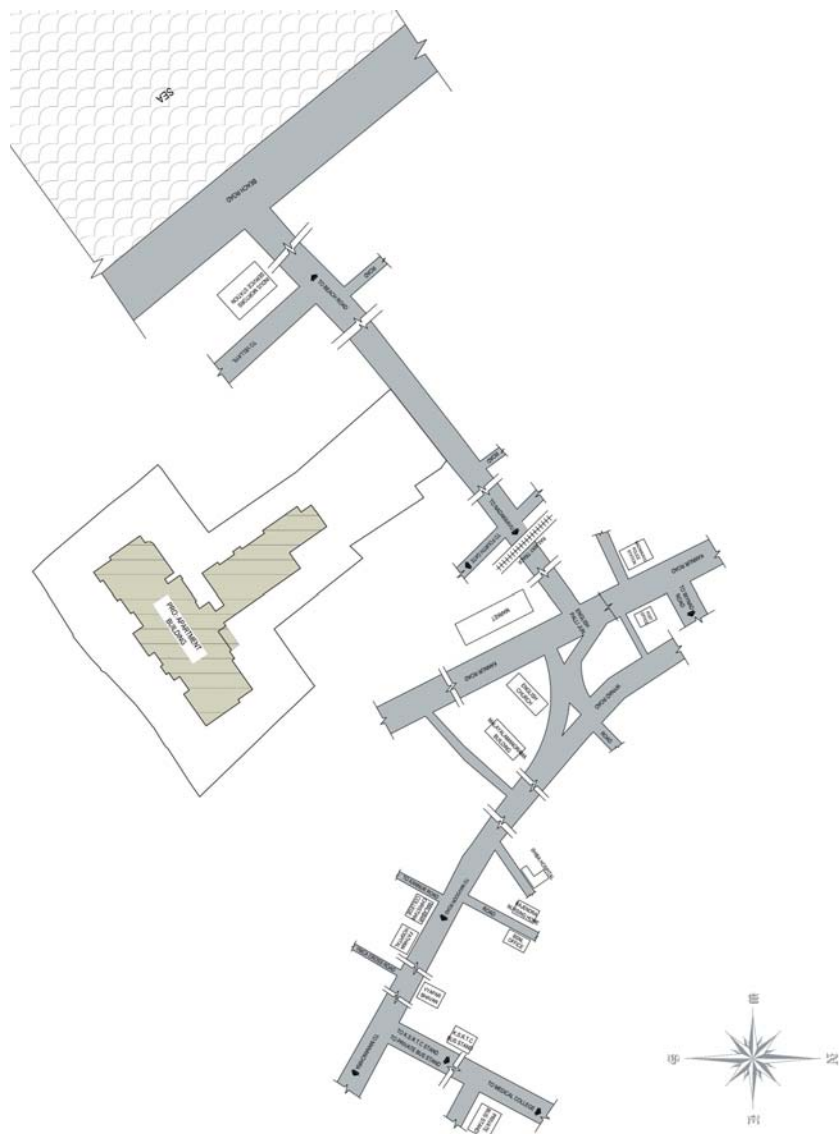
Fathima Hospital

Rajendra Nursing Home

Shiba Hospital

Malayalam Manorama

### Location Plan



## ADVANTAGE- PREFERENCES

61 Luxury Apartments- Ground + 14 Floors at affordable rates.

Apartments facing the sea from 3rd Floor onwards.

- **3 BEDROOM APARTMENTS**

1435 sq.ft/1485 sq.ft/1585 sq.ft.

- **2 BEDROOM APARTMENTS WITH STUDY**

1220 sq.ft.

- **2 BEDROOM APARTMENTS**

1045 sq.ft.

## ADVANTAGE- CONVENIENCES

- Recreation Lounge
- Wading Pool
- Fitness Center
- Terrace Party Area on the 11th Floor
- 3 Phase Connections for all Apartments.
- Lifts to all floors.
- Landscaped exteriors.
- Covered car parking available.
- Stand by generator.
- Good potable ground water available in plenty.

## ADVANTAGE- ATTENTION TO DETAILS

### >STRUCTURE

RCC frames structure with Laterite/ Brick / Concrete block masonry walls plastered smooth and painted.

### >FLOORING

Vitrified tiles flooring at Rs.40/- per sq.ft.

### >JOINERY

Teakwood polished commercial flush main door and painted internal doors.

Wooden/ Aluminium windows with MS grills.

### >KITCHEN

Granite slab platform with stainless steel sink.

### >GLAZED TILES

Upto 7 feet height in the bathrooms and 2 feet height above the kitchen platform.

### >PLUMBING & SANITATION

GI/PVC water lines, PVC waste water & soil lines, common water sump and open well/bore, Overhead tanks.

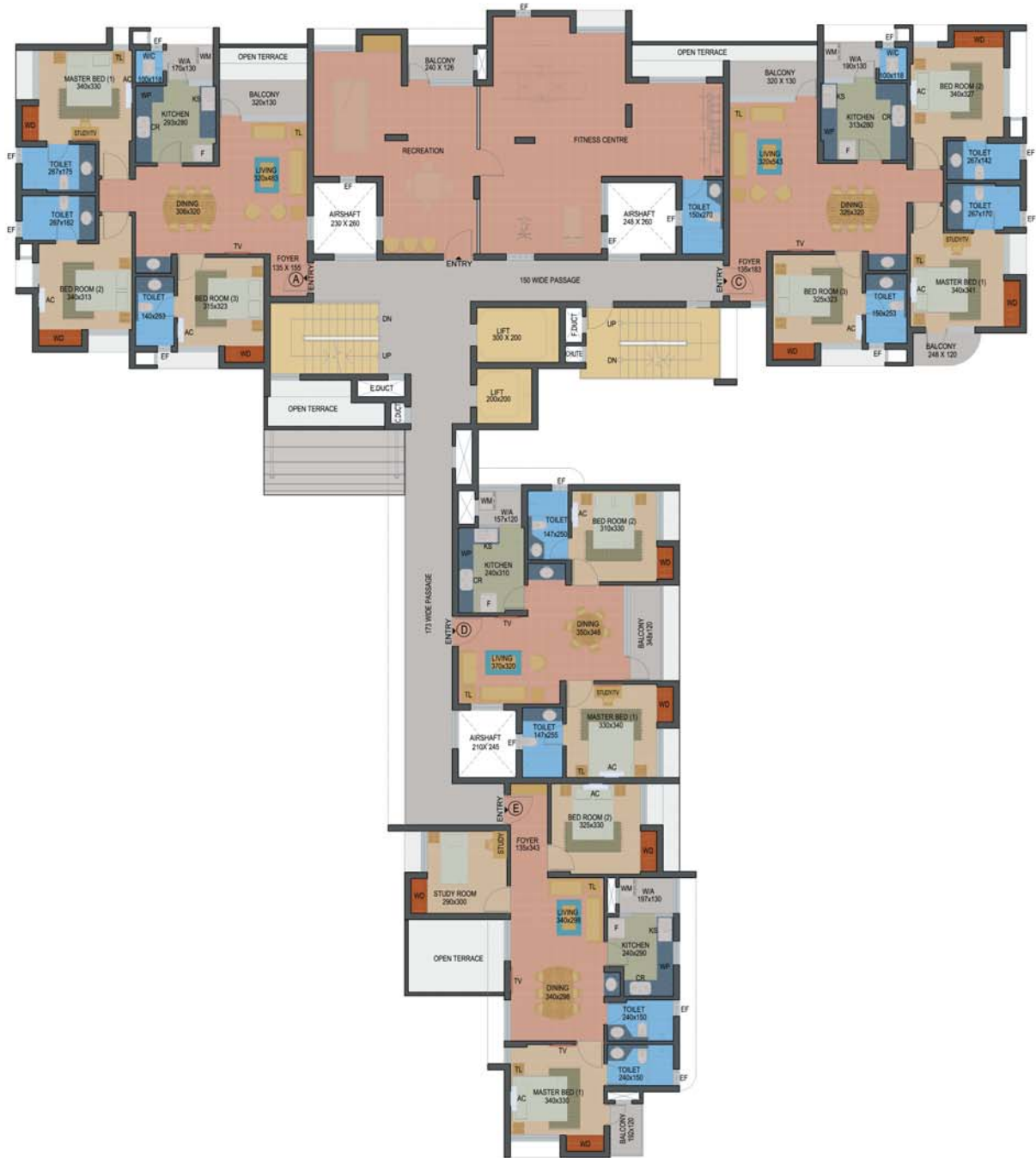
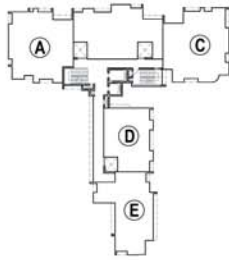
### >ELECTRICAL

Three phase connection with concealed PVC conduit wiring with necessary service points, PVC conduits for TV antenna and telephone.

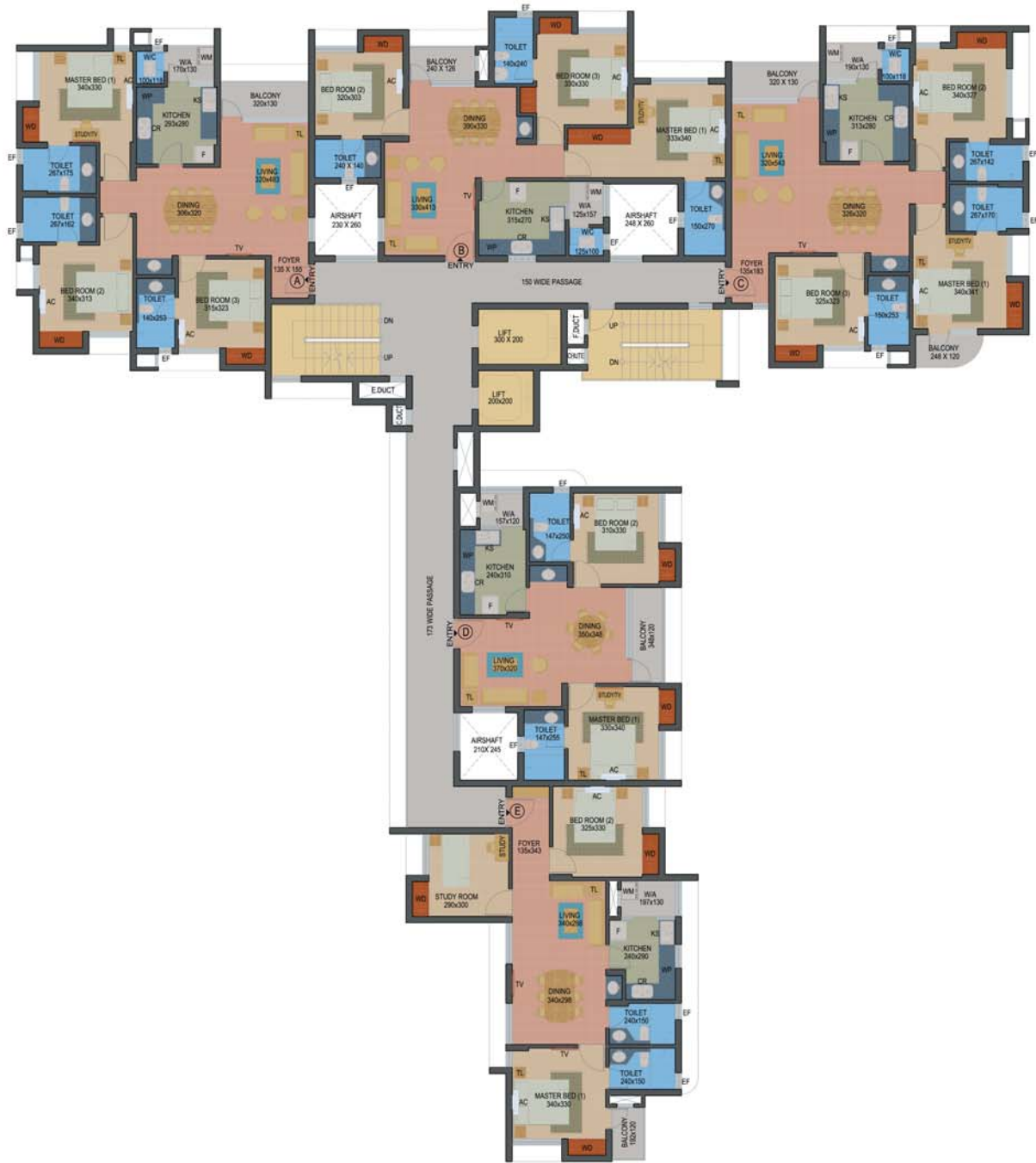
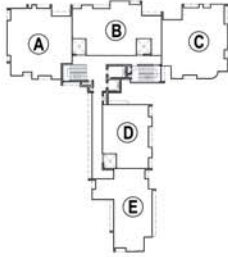
# Site cum Ground Floor cum Parking Space



# First Floor Plan

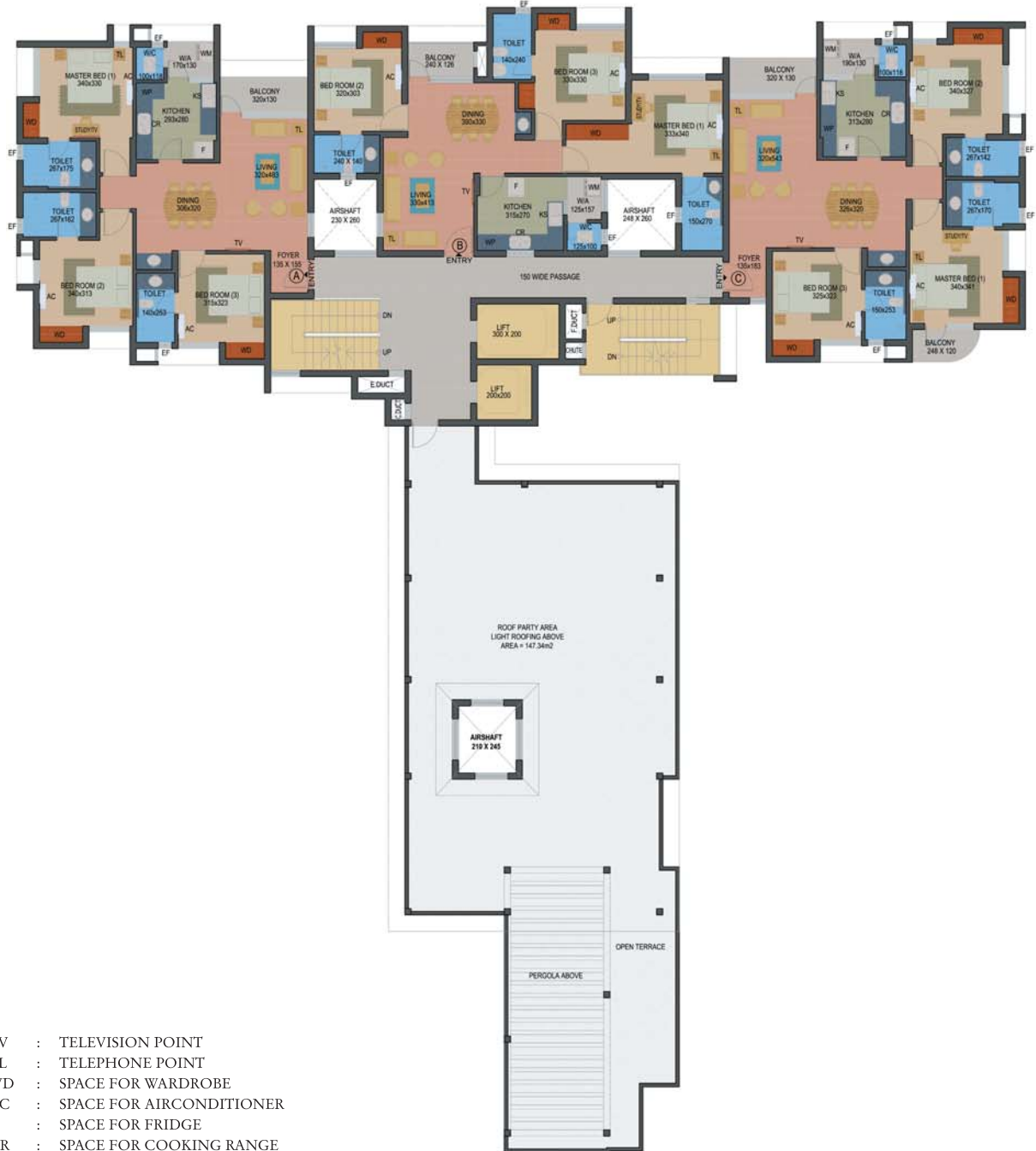
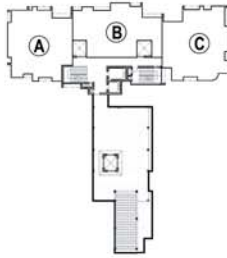


# Typical Floor Plan (2nd - 10th)



- Dimensions may vary slightly during construction.
- Furniture and fixtures are indicative only.
- All dimensions are in centimeters.
- Plans and areas are subjected to minor changes.

# 11th Floor Plan



- TV : TELEVISION POINT
- TL : TELEPHONE POINT
- WD : SPACE FOR WARDROBE
- AC : SPACE FOR AIRCONDITIONER
- F : SPACE FOR FRIDGE
- CR : SPACE FOR COOKING RANGE
- KS : STAINLESS STEEL KITCHEN SINK
- WP : WORKING PLATFORM
- WM : SPACE FOR WASHING MACHINE
- EF : OPENING FOR EXHAUST FAN

# 12th to 14th Floor Plan

